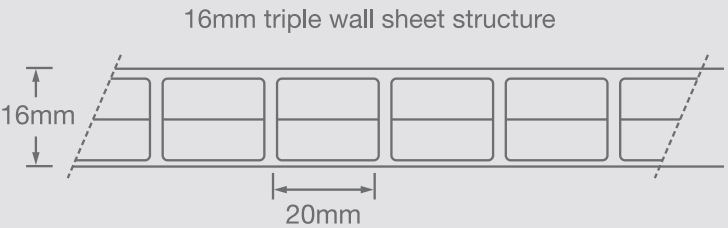


Data Sheet

COBERTECNIC™

16mm Triple Wall Polycarbonate



Available colours:

16mm triple wall polycarbonate:
CLEAR / OPAL

Aluminium Frame:

Any current powdercoat colour. Please ensure colours are identified by name and ID number.

16mm Triple Wall polycarbonate is the sheet used in COBERTECNIC systems. Made from high grade polycarbonate (Lexan material) with incredible strength to weight properties, 16mm triple wall polycarbonate is the perfect roof sheets for this system. The triple wall (as shown above) allows incredible strength due to the honeycomb structure of the sheet. Being incredibly light, the panels simply retract without due pressure placed on the motors ensuring a long lasting life to the tubular motors. At only 2700 gsm, this engineered material is the perfect choice.

Technical information

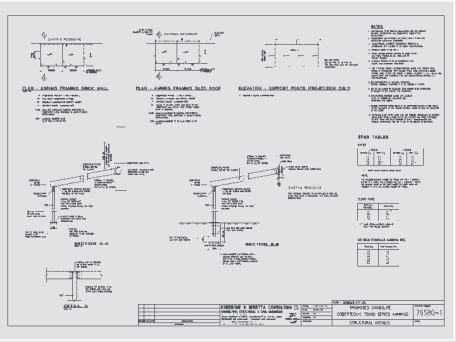
SHEET Light Colour	Shading transparency*	Coefficient*	K Values	Sound Reduction db	Weight
Clear	74%	0.90	2.4	21	2700gsm
Opal	63%	0.79	2.4	21	2700gsm

Span Charts

Panel sizes		4 groove		3 groove		End Beam (150 x 50 x 3.0 RHS) (meters)	
Width (mm)	Depth (mm)	Spacing (m)	Span (m)	Spacing (m)	Span (m)	Rafter span	Post spacing
		1.5m	6.5m	1.5m	4.9m	3.0	4.8
1.5m	1.1m	2.0m	6.0m	2.0m	4.3m	3.5	4.4
2.0m	1.1m	2.5m	4.8m	2.5m	3.9m	4.0	4.1
2.5m	1.1m	3.0m	3.0m	3.0m	2.4m	4.5	3.9
						5.0	3.7
						5.5	3.5

Cobertecnic™ is a registered trade mark of Espai Sistemes. The system is manufactured under license to ECOAWNINGS Pty Ltd for Australia and New Zealand. The information contained in this brochure is to the best of our knowledge accurate but all recommendations are made without warranty as the conditions of use are beyond our control. All enquiries for Local Government approvals of use regarding installations must be made by the purchaser and/or authorised reseller. All warranties for the Cobertecnic system can be found on the warranty card.

Approved distributor



Fully engineered design

ecoAWNINGS

opening roof systems

COBERTECNIC™



100% Waterproof || 100% Airtight || 100% Comfortable

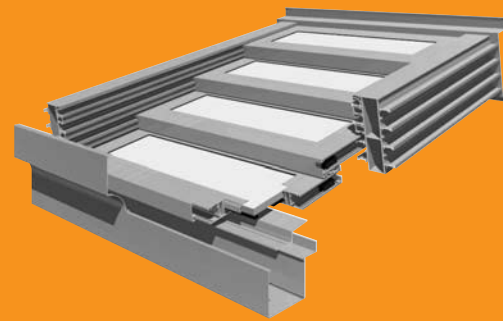


T-5000 series **motorized**

Introducing the COBERTECNIC opening roof systems direct from Europe.

The retractable roof systems are **completely watertight and airtight** and provide a high degree of insulation against the elements, ensuring **optimal energy use**. The high quality design of the profiles, made from high grade aluminium ensures the framing systems are strong yet incredibly lightweight.

The systems are fully motorised, using tubular motors designed to last. **At the push of the button**, you can open up the roof up to 80% (depending on the system chosen) and close the roof when it rains. A rain sensor can be added to the system for peace of mind. When sunny, open the roof and that beautiful sunshine can stream through. With the roof material made from 16mm Twin wall polycarbonate sheeting, you have the peace of mind a superior roof system brings.



the **systems**

T-5000 5 panel / 4 track systems. (80% or $\frac{4}{5}$ opening)

Recommended for spans from 5m to 6.5m.

- Fully motorised systems using tubular motors.
- High grade aluminium frame fully engineered.
- Choice of 16mm Triple Wall polycarbonate sheet (Clear/Opal) for roof.
- Fully watertight and airtight (if enclosed).
- Roof can be wall or roof mounted.
- Sheet spans between rafters up to 2m.
- Gutters to front.
- Top fixed panel is ABOVE the rafter.



T-5000 4 panel / 4 track systems. (75% or $\frac{3}{4}$ opening)

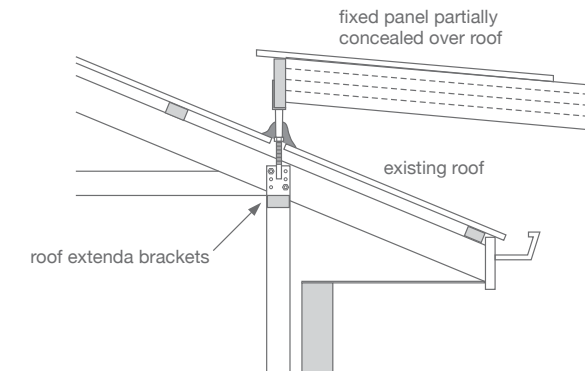
Recommended for spans from 4m to 5m.

- Fully motorised systems using tubular motors.
- High grade aluminium frame fully engineered.
- Choice of 16mm Triple Wall polycarbonate sheet (Clear/Opal) for roof.
- Fully watertight and airtight (if enclosed).
- Roof can be wall or roof mounted.
- Sheet spans between rafters up to 2.5m.
- Gutters to front.
- Top fixed panel is INSIDE the rafter.

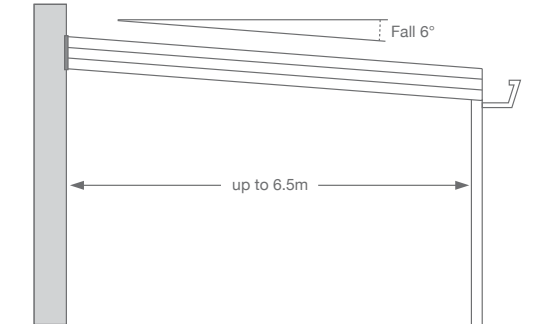


Roof mount

By using roof mounted brackets, attached to the existing house rafters (tiled roofs only) we can increase head height and have the fixed panels partially concealed over the house roof.



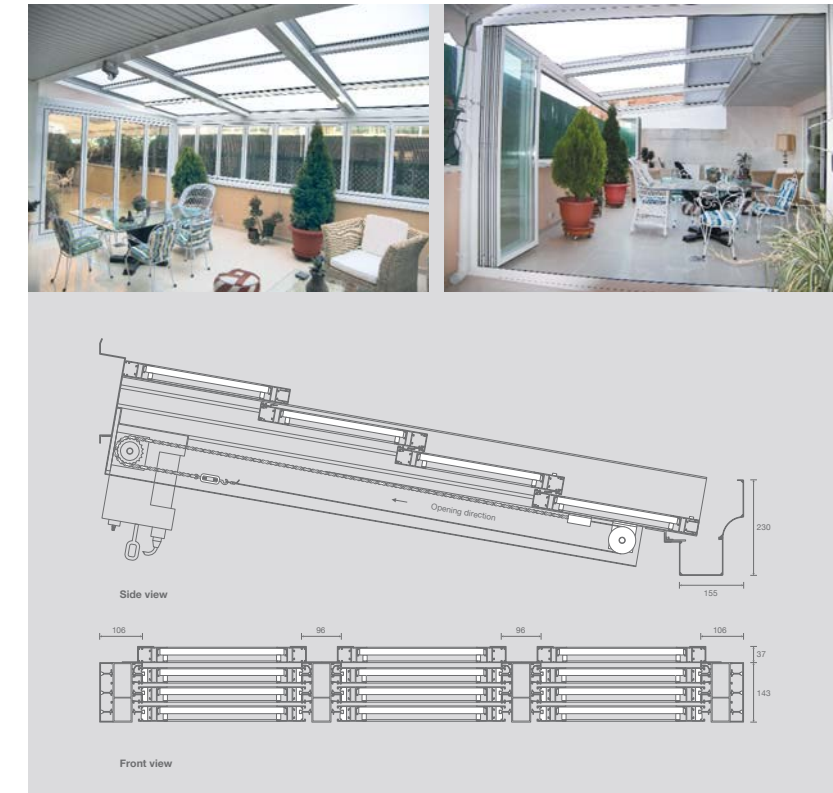
Wall mount



T-5000 4 panel / 3 track systems. (75% or $\frac{3}{4}$ opening)

Recommended for spans from 3m to 4m.

- Fully motorised systems using tubular motors.
- High grade aluminium frame fully engineered.
- Choice of 16mm Triple Wall polycarbonate sheet (Clear/Opal) for roof.
- Fully watertight and airtight (if enclosed).
- Roof can be wall or roof mounted.
- Sheet spans between rafters up to 2.5m.
- Gutters to front.
- Top fixed panel is ABOVE the rafter.



T-5000 3 panel / 3 track systems. (66% or $\frac{2}{3}$ opening)

Recommended for spans from 2m to 3m.

- Fully motorised systems using tubular motors.
- High grade aluminium frame fully engineered.
- Choice of 16mm Triple Wall polycarbonate sheet (Clear/Opal) for roof.
- Fully watertight and airtight (if enclosed).
- Roof can be wall or roof mounted.
- Sheet spans between rafters up to 2.5m.
- Gutters to front.
- Top panel is fixed INSIDE the rafter.

